

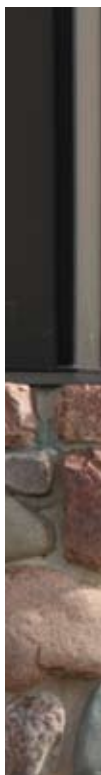
GENERAC®

**PRESSURE
WASHERS**



residential

commercial



pressure





washers

residential and commercial



vehicles

boat

ATV / UTV

windows

siding

porch

exterior walls

deck

roof maintenance

pool covers / tarps

patio

landscaping / leaves

fencing

driveway

sidewalk

garage floor

paint preparation

lawn mowers

brickwork

farm equipment

construction

graffiti removal



you'll think it

Generac asked consumers what they want from a pressure washer. They told us they needed cleaning power, reliability and—above all—ease of use. In a compact unit

ACCESS



“ I want the pump to be easy to reach, so that I can easily connect the hoses. ”

Because every Generac pressure washer features a Generac horizontal-shaft OHV engine, the pump is at the same level as the engine, making hose connections easy—unlike vertical-shaft engines, where the hose connections are beneath the engine and more difficult to reach.

We designed our pressure washers so the engine and pump are perfectly balanced over the axle for almost effortless maneuverability, regardless of the terrain. And the Generac horizontal-shaft OHV engine ensures that the pump and hoses are kept well above the ground, avoiding snags. It also means you can easily gather the hoses when maneuvering the unit during operation.

“ I need to be able to easily move the pressure washer when I'm using it. ”

MOBILITY




was made just for you

that they can afford. We designed and built our new line of pressure washers specifically to meet these needs.



POWER



“The engine has to be powerful and built to last.”

Generac first designed and built air-cooled engines in the early 1990s for our portable generators. Every one of our pressure washers features a Generac horizontal-shaft OHV engine

with low-oil shutdown—not featured on vertical-shaft engines. As for power, every Generac pressure washer model has the largest engine on the market for that pressure rating.

Generac designed the spray gun with ergonomics in mind. The soft grip helps reduce fatigue. You can pull and hold the inverted fulcrum spray trigger with minimal effort. And on our larger units—3000 PSI and above—the spray gun comes with an adjustable auxiliary handle for additional comfort and control when cleaning up high, down low or anywhere in between.

“A comfortable spray gun is a must.”

COMFORT





PSI	2500
GPM	2.3
Cleaning Power	5750
Pump	Axial cam
Engine	Generac OHV with low-oil shutdown
Engine Displacement	196cc
High-Pressure Hose	25 feet
Soap Tanks	Siphon hose
Quick-Click™ Nozzle Tips	(3) 0°, 25°, Soap
Model Number (49-State/CARB)	5887/5988
Limited Warranty	2 years

AVAI

esidential

pressure washers



Get cleaning power, reliability and—above all—ease of use in an affordable, compact design you can use to clean everything from patio furniture to driveways and decks.

boat

ATV / UTV

windows

siding

porch

deck

concrete - light stains

mold / mildew

lawn mower

patio furniture

fencing

sidewalk

driveway

landscaping / leaves

garage floor

2700	3000
2.3	2.7
6210	8100
Axial cam	Axial cam
Generac OHV with low-oil shutdown	Generac OHV with low-oil shutdown
196cc	212cc
25 feet	30 feet
(1) 1 gallon tank	(2) 1 gallon tanks
(4) 0°, 25°, 40°, Soap	(5) 0°, 15°, 25°, 40°, Soap
5989/5990	5991/5992
2 years	2 years

AVAILABLE IN SPRING 2011

CO



PSI	3000
GPM	2.8
Cleaning Power	8400
Pump	Triplex with ceramic - coated pistons and pressure adjustment valve
Engine	Generac OHV with low-oil shutdown
Engine Displacement	212cc
High-Pressure Hose	35 feet Non-marring rubber
Quick-Click™ Nozzle Tips	(5) 0°, 15°, 25°, 40°, Soap
Model Number (49-State/CARB)	5993/5994
Limited Warranty	3 years

AVAIL

Commercial

pressure washers

With an industrial-grade triplex pump and a durable, welded steel frame that protects both the engine and pump, these rugged pressure washers are easy to use and built to last.



paint preparation

brickwork

farm equipment

construction

yard equipment

concrete - all stains

graffiti removal

garage floor

retaining walls

driveway

sidewalk

patio

deck

fencing

mold / mildew

3300	4000
3.2	4.0
10560	16000
Triplex with ceramic - coated pistons and pressure adjustment valve	Triplex with ceramic - coated pistons and pressure adjustment valve
Generac OHV with low-oil shutdown	Generac OHV with low-oil shutdown
302cc	420cc
35 feet Non-marring rubber	50 feet Non-marring rubber
(5) 0°, 15°, 25°, 40°, Soap	(5) 0°, 15°, 25°, 40°, Soap
5995/5996	5997/5999
3 years	3 years

AVAILABLE IN SPRING 2011

COMMITMENT TO SERVICE

Generac is committed to providing our customers with unsurpassed service and support after the sale.

Our comprehensive training program and state-of-the-art training center ensure that Generac service technicians receive thorough classroom training and extensive hands-on experience in the repair and maintenance of Generac products. The result—peace of mind for all of our customers.

A TRADITION OF QUALITY AND INNOVATION

For over 50 years, Generac Power Systems has been a leader in innovative design and superior manufacturing. When it comes to developing products that are both durable and reliable, we stand head and shoulders above our competition. The result of our efforts can be seen across our many product offerings.

We design and build engine-driven power generation equipment, automatic transfer switches, control systems, air-cooled engines and pressure washers. Regardless of the product, our vertical integration allows us to control the quality, availability and flow of materials throughout the manufacturing process. And each product is factory tested prior to shipment.

It is this ongoing commitment to quality and innovation that has made Generac a name that people have come to trust.



Generac Power Systems, Inc.
S45 W29290 Hwy. 59
Waukesha, WI 53189
1-888-GENERAC (1-888-436-3722)