



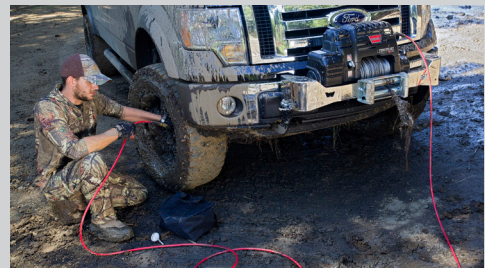
# WARN PowerPlant 9.5 and 12

New and improved winch/air compressor now offers increased performance and reliability.

The new WARN® PowerPlant™ 9.5 and PowerPlant 12 combine a powerful winch with a high-performance air compressor for the ultimate vehicle-mounted multi tool. The PowerPlant 9.5 has a pulling capacity of 9,500 lbs.; the PowerPlant 12 will pull 12,000 lbs. Both models are equipped with a powerful air compressor that can air up four 35" tires in eight minutes and even run air tools. With new additions such as stainless steel fasteners, a new pressure switch, a revised contactor, and a new hose and accessories, the PowerPlant is better than ever.



*PowerPlant includes new air accessories and a durable nylon carrying case*



WARN PowerPlant 9.5 PN 91800  
WARN PowerPlant 12 PN 91801



**FEATURES INCLUDE:**

- Series-wound motor with thermal protection shutoff switch.
- Three-stage planetary gear train for smooth, efficient operation.
- Extreme duty winch sealing for superior water resistance.
- Stainless steel fasteners for exceptional corrosion protection.
- Wire rope with roller fairlead (125' of 5/16" for PowerPlant 9.5; 80' of 3/8" for PowerPlant 12).
- Mechanical brake for reliable operator control while winching.
- Improved contactor control for great reliability and long duty cycles.
- Pressure switch limits maximum/minimum air pressure in reservoir.
- Intercooler/air reservoir reduces compressed air temperature. Half-gallon air reservoir helps even airflow.
- High-output air compressor delivers 5 CFM @ 90 PSI; maximum air pressure is 100 PSI.
- Air outlet/hose connection works with quick-connect couplers.
- Hand-held control for operation of both winch and compressor. LED provides feedback on motor temperature.
- Accessory kit includes new, more durable and flexible 20' (6.1m) air hose; quick-connect couplers; WARN-branded tire pressure gauge and dual air chuck; and sturdy carry bag.
- New corrosion-resistant flat-black finish.

WARN PowerPlant 9.5 **PN 91800**  
 WARN PowerPlant 12 **PN 91801**

**SPECIFICATIONS:**

**Rated line pull:** PowerPlant 12 – 12,000 Lbs., (5440 kg) PowerPlant 9.5 – 9,500 Lbs., (4310 kg)

**Motor:** Series-wound 4.6 hp 12V, with thermal protection shutoff switch

**Electrical controls:** Contactor

**Remote control:** Remote switch with thermometric LED and 12' (3.7m) lead

**Gear train:** 3-stage planetary

**Gear ratio:** PowerPlant 12 - 216:1, PowerPlant 9.5 – 156:1

**Clutch (freespooling):** Sliding ring gear

**Brake:** Automatic mechanical cone brake

**Wire rope:**  
 PowerPlant 12 – 80' of 3/8" (24m of 9.5mm diam.)  
 PowerPlant 9.5 – 125' of 5/16" (38m of 8mm diam.)

**Fairlead:** Roller

**Recommended battery:** 650 CCA minimum

**Battery leads:** 2 gauge, 72" (1.83m)

**Finish:** Flat black powdercoat

**Drum diameter/Length:** 2.5"/9" (6.4cm/23cm)

**Weight:** PowerPlant 12 – 115 Lbs. (52 kg)  
 PowerPlant 9.5 – 100 Lbs. (45 kg)

**Compressor**

**Air Reservoir:**  
 1/2 gallon with Integrated Air Intercooler

**High Air Flow Rating:**  
 12 CFM @ 0 psi, 5 CFM @ 90 psi

**Max Air Pressure:** 100 psi

**Air Pressure Switch:** Yes

**Air Hose:** 20', with quick-disconnect. Brass air fittings and couplings

**Dimensions:**  
 24.31" L. x 6.7" D. x 13.46" H. (617mm L. x 170mm D. x 342mm H.)

**Mounting bolt pattern:**  
 10.0" x 4.5" (254mm x 114.3mm)

See [warn.com](http://warn.com) for drawing showing winch dimensions

**12V DC performance specs (PowerPlant 12, first layer)**

Line Pull Lbs. (kg)	Line Speed Ft./min. (M/min.)	Motor Current	Pull by layer: layer/Lbs. (kg)
0	27.8 (8.47)	90 amps	1/12,000 (5440)
2000 (910)	14.8 (4.51)	174 amps	2/9517 (4317)
4000 (1810)	10.8 (3.29)	270 amps	3/7886 (3577)
6000 (2720)	8.2 (2.50)	333 amps	4/6732 (3054)
8000 (3630)	6.2 (1.89)	389 amps	
9500 (4310)	4.9 (1.49)	456 amps	
12000 (5440)	3.6 (1.10)	566 amps	

**12V DC performance specs (PowerPlant 9.5 first layer)**

Line Pull Lbs. (kg)	Line Speed Ft./min. (M/min.)	Motor Current	Pull by layer: layer/Lbs. (kg)
0	28.8 (8.78)	94 amps	1/9500 (4313)
2000 (910)	16.4 (4.50)	165 amps	2/8650 (4927)
4000 (1810)	12.3 (3.75)	238 amps	3/7920 (3595)
6000 (2720)	9.5 (2.90)	307 amps	4/7400 (3359)
8000 (3630)	7.5 (2.29)	383 amps	5/6940 (3150)
9500 (4310)	6.2 (1.89)	451 amps	

Note: Auxiliary air tank required to operate some types of air tools

**Warn Industries, Inc.**  
 12900 S.E. Capps Road,  
 Clackamas, OR USA 97015-8903



Customer Service (North America):  
**1-800-543-9276**  
 International Sales Support:  
**+1 503 722 1200**  
[www.warn.com](http://www.warn.com)